

Product name: HDi VW Transporter T5 GT2 complete intercooler kit

Product code: HDI-IK-GT2-T5

HDi VW Transporter T5 GT2 complete intercooler kit is designed to replace a regular standard factory unit and give greater airflow potential resulting in increased performance and reduce in fuel consumption. The GT2 Tube and fin strong design is also tested withstand high boost in diesel application.

Installation:

Installation of HDi VW Transporter T5 GT2 complete intercooler kit is simple. It comes with all fittings and brackets as well as the unique oil drain plug and boost gauge fitting ports, It is easily installed with basic workshop tools, installation is a quick and easy process normally it takes less than 30 min!

The HDi VW Transporter T5 GT2 complete intercooler kit benefit as below:

- Improved low end throttle response!
- Minimal pressure drop
- Large cooling surface area
- Increased torque range from low rpm
- Reduction of both inlet and out let temperatures
- less engine running temperatures
- Increased performance
- Consistency power increase
- Increase power throughout entire RPM range
- Improve fuel efficiency
- Unique oil drainage port
- Built in boost gauge port
- Best value for money
- The pressure drop is less than 0.2 psi!
- Flow area is over 115% increased!
- Flow rate is over 185% increased!
- Power increase projected 9-15 hp but tongue and throttle response will be big increased. Peak Boost and peak torque will be 220-350 rpm earlier!
- Performance guaranteed!

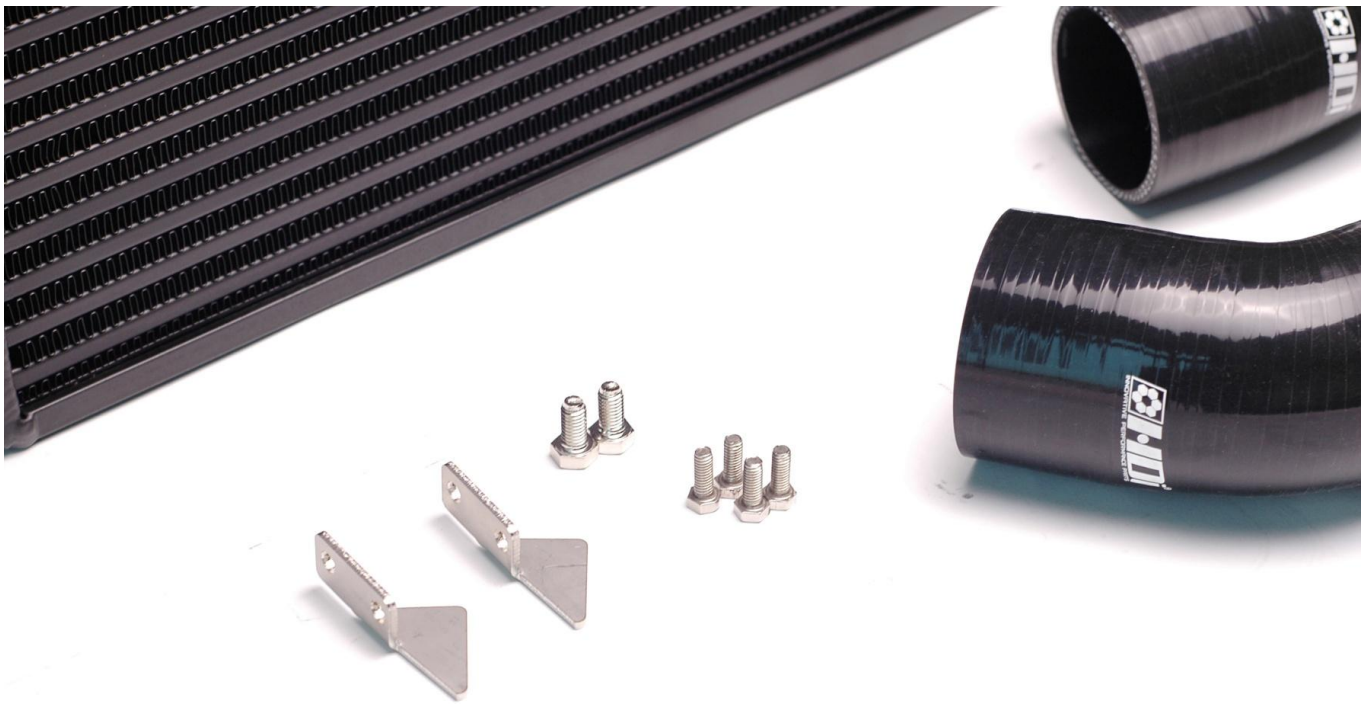
Full stainless steel screws and brackets the best durability against water and salt corrosion. The special design allowing high boost application and for city low air flow driving condition. It also allows good air flow to the radiator!

Product parts list

Part #	Description	quantity	note
HDi-GT2-T5	HDi VW Transporter T5 GT2 complete intercooler	1	
HDi-BK-64L	HDi VW Transporter T5 GT2 complete intercooler kit left bracket	1	
HDi-BK-64R	HDi VW Transporter T5 GT2 complete intercooler kit right bracket	1	
HDi-BK-64B-L	HDi VW Transporter T5 GT2 complete intercooler kit Left lower bracket	1	
HDi-BK-64B-R	HDi VW Transporter T5 GT2 complete intercooler kit right lower bracket	1	
HDi-M5-fitting	HDi VW Transporter T5 GT2 complete intercooler kit fitting for Boost gauge port	2	
M5 X 8	Boost gauge port block off screw	2	
M6 X 12	HDi Stainless steel M6 X 12 intercooler screw	6	
M8 X12	HDi Stainless steel M8 X 12 intercooler top screw	2	
HDi-SH-L-148	HDi VW Transporter T5 GT2 complete intercooler kit Reinforced silicon hose LEFT	1	
HDi-SH-R-149	HDi VW Transporter T5 GT2 complete intercooler kit Reinforced silicon hose RIGHT	1	
HDi-SC-275	HDi Super Stainless steel hose clamps 2.75 "	4	
M5	Washer with O ring	2	
M6	Washer With O ring	2	



Stainless Top brackets and stainless screws set



Stainless steel lower brackets



High pressure Reinforced silicon hose





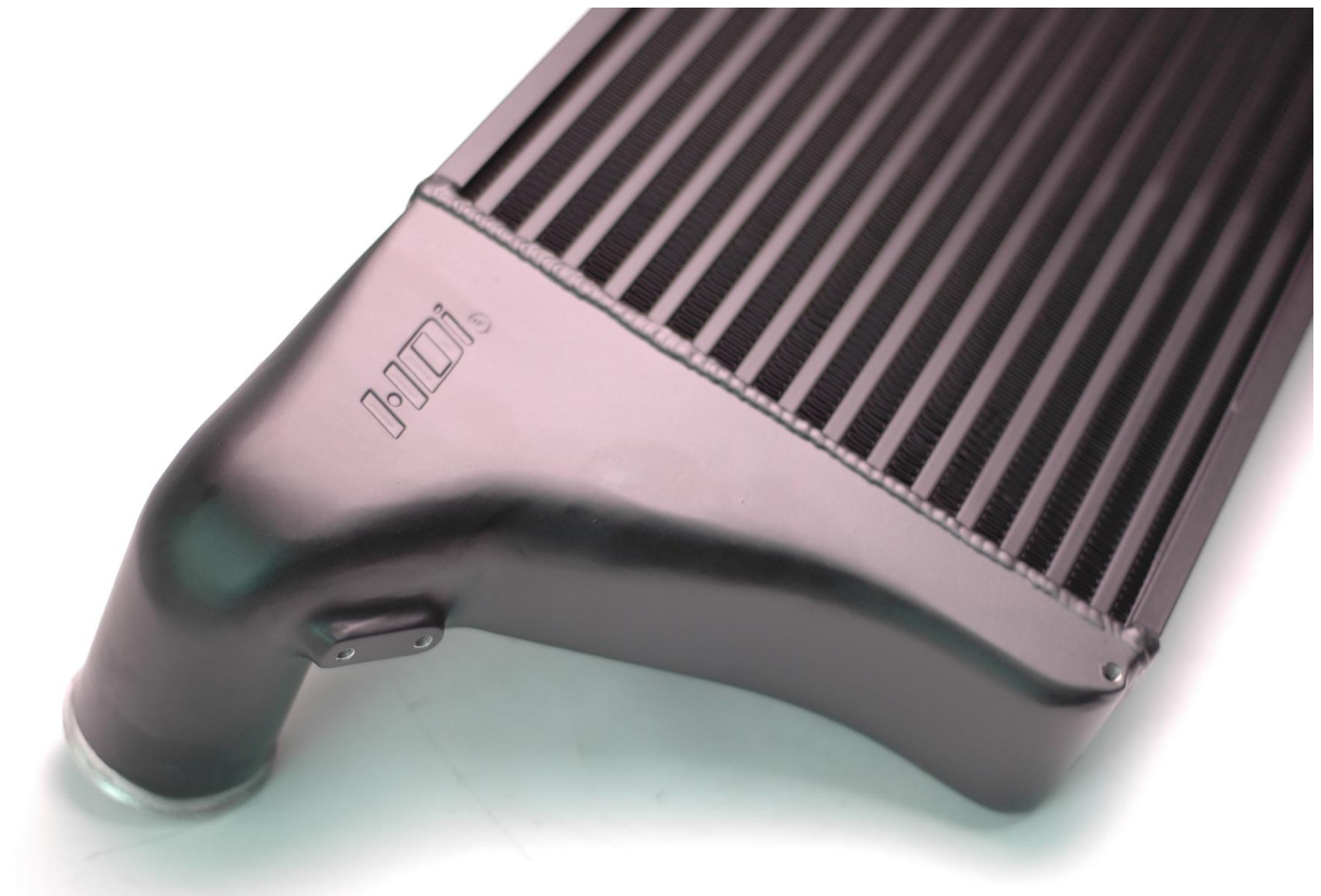
High Quality T5 VW Specific Design



Complete light weight high blow design



Unique oil drain port





Unique boost gauge ports



Ultra light weight!

Dyno test





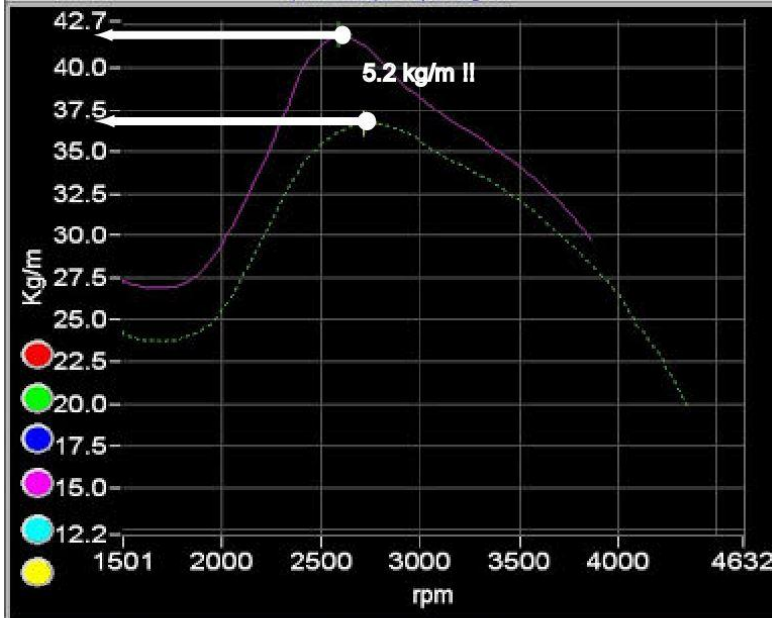
Front grille is removed ready for the dyno of the standard intercooler



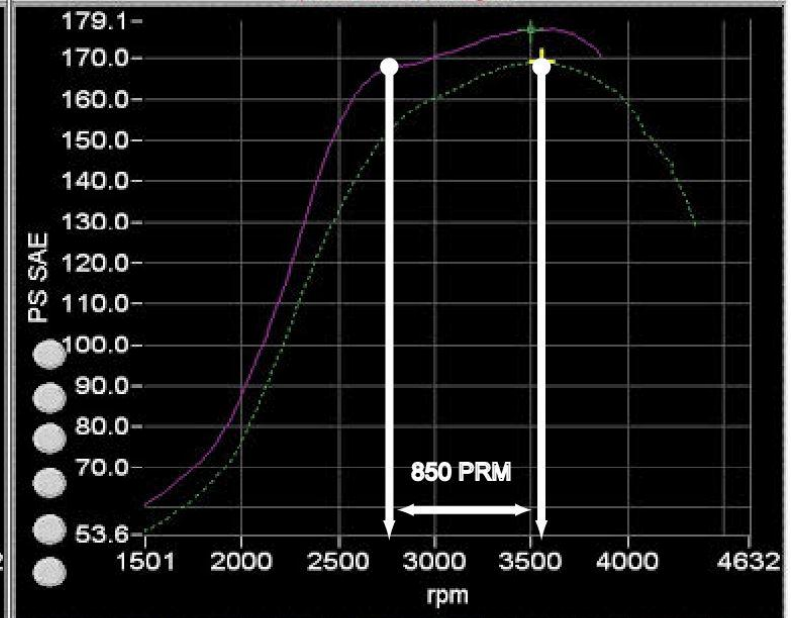
Test Standard intercooler



Test with the HDi GT2 intercooler kit installed
Test completed



36.7	70	2717	ratio	4.400
Kg/m	km/h	rpm	tcf	1.00
41.9	66	2585	gain	5.2



169.2	91	3555	ratio	4.400
PS SAE	km/h	rpm	tcf	1.00
177.0	90	3498	gain	7.7

Test Vehicle VW T5 Transporter

Year:2012

Modification: computer

'boost: Max 1.7 Bar

In order to fully test the HDi GT2 intercooler's performance, the test vehicle is already modified with peak 1.7 bar of boost!

We have done 4 runs with the standard car and 4 runs with the change of the HDi GT2 intercooler till the graph is stable.

Test results are very satisfactory! Resulting **peak power 850RPM earlier** it means the engine not need to do as much as 850 RPM strokes and deliver the same peak horse power!!

Moreover the massive **5.2 KG/M of torque gain** put towing an easy!!!

The car is much powerful and more responsive the HDi GT 2 intercooler brings up earlier torque and power. It effectively improves the efficient and reduces stress on the engine and the turbo.

Simple Installaiton

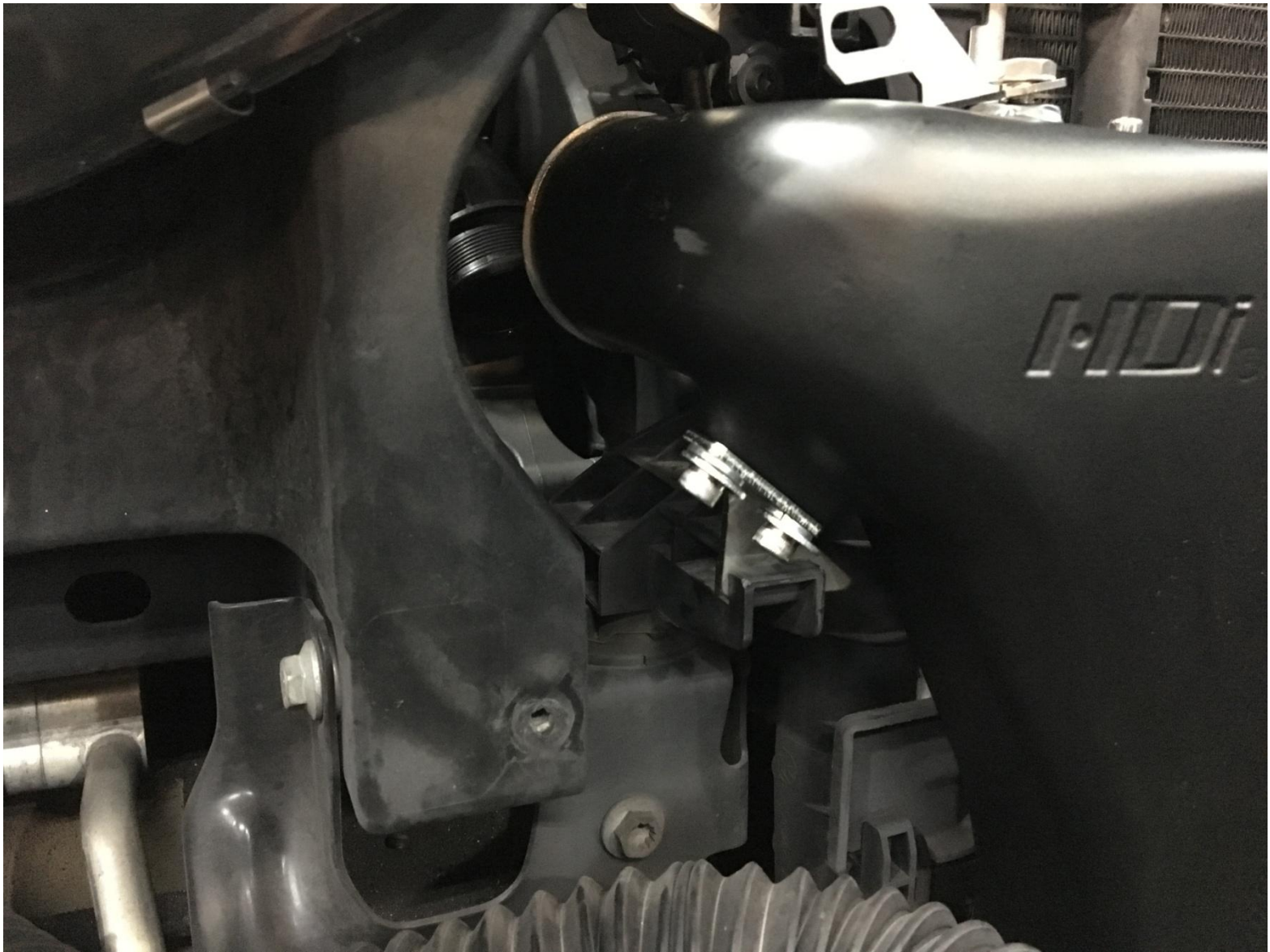


Remove the standard and install the HDi VW Transporter T5 GT2 complete intercooler kit

After the bar is removed
Installing HDi VW Transporter T5 GT2 complete intercooler kit is easy it take about 20 minutes



HDi GT2 intercooler comes with high quality GT2 logo pressed for identification.



Install the supplied bottom brackets please do not tighten them for perfect adjustment
Tighten them after all checked

Note: The hoses are intentionally designed for being very tight, the T5 runs a very high, boost over 1.75 bars sometimes and stand connector has been reported leaking as well as breaking that is why our intercooler kit is specifically designed for holding this kind of boost and the silicon hoses were designed with minimizing expansion and extra strength, please use a bit of household detergent (not WD40 or other lubrications) inside that will ease the fitting

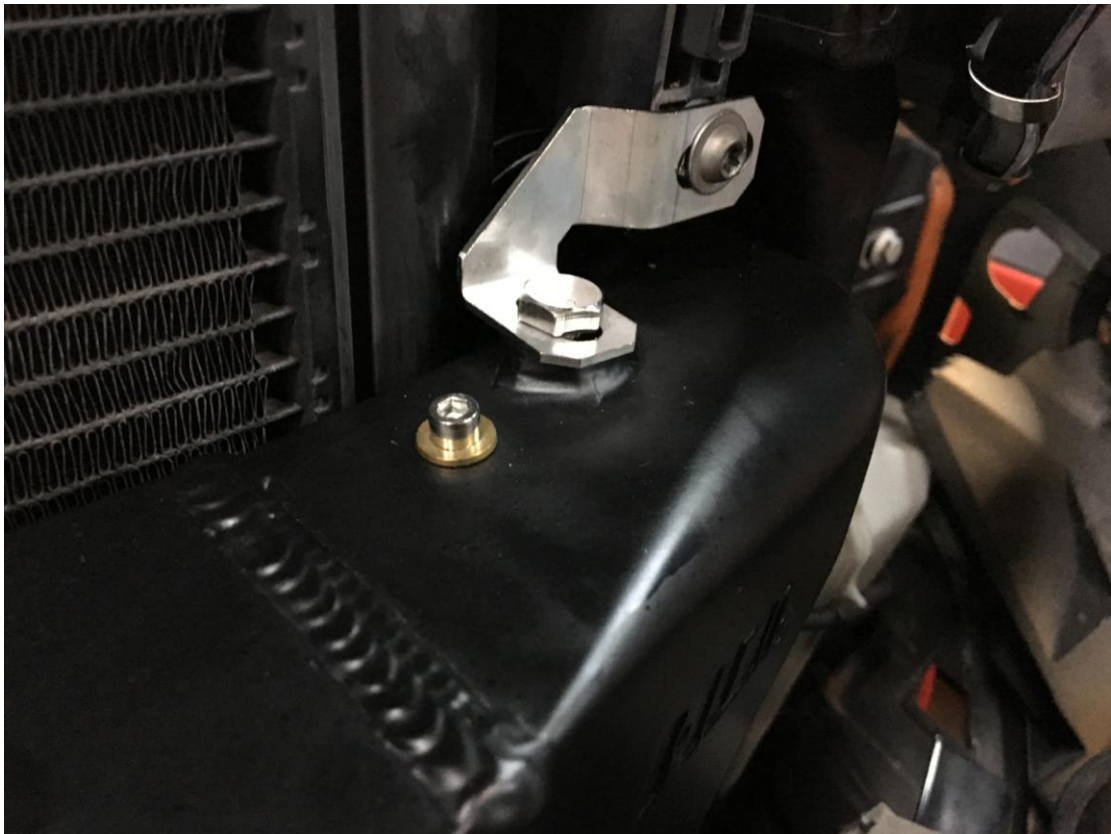
please see:

https://www.youtube.com/watch?v=V_Rq2BzGWmQ

please do not over tight the hose clamps.



The HDi silicon hoses can also preinstalled while the HDi intercooler positioned as shown.



Install the supplied top bracket pas well as installing the blockage plug if the boost gauge port is not
Installed
Please do not tighten them for perfect adjustment



Once all connections and brackets are checked you can tighten them and install all the original parts back in and Enjoy the performance!